

WERKMASTER™
Ultra Floor Systems

Taking it to the Wall!



Termite



WerkMaster Termite XT Small & Versatile Grinder & Polisher



The WerkMaster Termite XT with Octi-Disc™ technology is the perfect choice for contractors and DIYers looking for versatility, speed, quality and exceptional results.

7 Machines in 1 — Grinds, strips, sands, buffs, burnishes, polishes and edges to within 1/8" (3 mm) of wall!

Removes thinset, epoxy, glue, paint and mastic

- Features WerkMaster Octi-Disc™ technology with 8 counter rotating heads and the versatility of using our 3" (76mm) ULTRA-FLEX Plug 'N Go tooling
- Termite XT comes with an adjustable, foldable handle for convenient use and easy transport. Run wet or dry on concrete, stone, terrazzo or VCT tile; dry on hardwood
- The dual action wet/dry vacuum port allows for dry, dust-free pick up and can be used with our optional water feature
- Plug into any 110 outlet and the variable frequency drive lets you run at speeds from 450 to 1800 RPM

Termite XT

Footprint: in (cm)	14 (30.5)
Disc Size: in (cm)	3 (7.6)
Weight: lbs (Kg)	110 (50)
Disc Speed Range: RPM	425-1800
Horsepower	1
Voltage: VAC	110
Frequency: Hz	50/60
Electric Phase: Ph	1
Breaker Size: Amp	15
Vacuum Req: CFM	150
Min. Generator: kW	2.5+
Max Cable Length: ft (m)	50+ (15+)

Please visit <http://www.werkmaster.com/product-videos/> for a demonstration of techniques using WerkMaster Machines for removing various adhesives and substrates from concrete.

WerkMaster Termite XT Maintenance Checklist

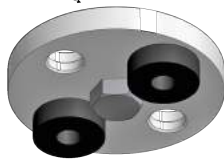
ATTENTION: It is important that the WerkMaster Termite go out to the end user with all included accessories. Ensure all moving parts in are in good working order.



DUST SKIRT

Ensure dust skirt is not chipped and in good working order. **A dust skirt that is broken may leak and release substrate material into the work area atmosphere.**

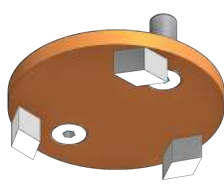
ULTRA-FLEX DRIVE™



GROMMET

ULTRA-FLEX DRIVE™

8 - ULTRA-FLEX DRIVE™ connected to machine output shaft. All ULTRA-FLEX DRIVE™ must include 2 grommets. Check for cracks and splits in grommets and replace prior to sending it out to rental.



TOOLING
(full plate 16 grit
shark type)

SURFACE PREPARATION

For removing coating like Glue, Epoxy, Paint and Thinset use WerkMaster full 3 inch full plate 16 grit shark tooling.

SURFACE PREPARATION



Tooling Grit Number

GRINDING, REDUCE SCRATCHES

All other WerkMaster Tooling please refer to: <http://www.werkmaster.com/machine-specific-tooling/> To purchase from an authorized WerkMaster Dealer

TOOLING

Ensure all tooling has the same even wear and is of the same grit. **Unevenly worn tooling will result in poor performance on the substrate you are working on.** The tooling grit number is stamped on the front of tool.

WARNING



SAFETY TOPICS:

Read the Operator's Manual or the Operation and Safety Guide and all of the safety precautions before attempting to operate WerkMaster machines. Failure to follow the safety precautions could result in severe personal injury or death. Please visit www.werkmaster.com

SAFETY CHECKLIST:

WARNING: ALWAYS turn the equipment off and unplug the power cord when changing discs/tooling, before servicing, and when not in use.



1. Before connecting the equipment to a power source make sure that is the correct voltage.
2. Ensure that all cords on the equipment are securely fastened and in good repair.
3. Ensure that all extension cords and power outlets are rated for the intended use, are in good repair, and are properly grounded (3 prong configuration).
4. Never operate the equipment under the influence of drugs or alcohol or when extremely fatigued.
5. If the equipment doesn't start or stops unexpectedly first check the power supply panel, then contact the rental dealer.



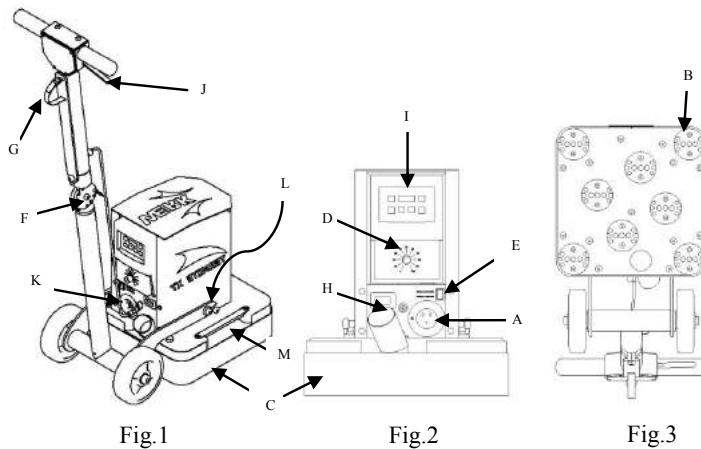
WARNING: Never turn the equipment on while it is tilted back. Any discs/tooling attached to the bottom could eject and become a lethal projectile.



Wear appropriate personal safety equipment such as hearing and eye protection and a dust mask or respirator.



Tool Application: To grind and/or polish a concrete surface. The TERMITE XT™ can be operated with or without using the handle.



Tool Operation:







Step	Action
1	Unplug the power cord from the flanged inlet (A). Ensure the handle is in its full upright position (Fig.1). Tilt the equipment back (Fig.3). Choose the appropriate tooling holder attachment – 3" magnetic Plug 'N Go plate (B) for Metal bond tools or 3" Foam/Velcro Adapter plate for polishing resins. Insert the 2 shear pins into the rubber grommets. Then attach the corresponding tooling to the plate.
2	Lift the equipment back to the upright position. Loosen and lower the dust skirt (C) so that it is just above the working surface. Turn the speed control knob (D) to 30%. For operation with the Handle/Wheel assembly go to step 3 & without the Handle/Wheel assembly proceed to Step 5
3	Turn the switch (E) to the "Handle Attached" position. Adjust the handle to a comfortable operating position by removing & inserting the pull pin at the swivel joint (F). Slide the vacuum hose & electrical power cord through the strap (G) on the holding arm. Connect the vacuum hose to the vacuum pipe (H). Plug the power cord into the flanged inlet (A).
4	The display/keypad (I) will light up. Grasp the handle bars (J). To start the equipment gently squeeze the activation lever (K). Adjust the speed as required. To stop the equipment let go of the activation lever. Proceed to Step 7.
5	Turn the switch (E) to the "Handle Removed" position. Unscrew the handle cable (K). Remove the 2 bolts (L) using a 6mm (7/32) allen wrench. Separate the handle assembly from the main body (Fig.2). Connect the vacuum hose to the vacuum pipe (H). Plug the power cord into the flanged inlet (A).
6	The display/keypad (I) will light up. Grasp the secondary handle bars (M). To start the equipment press the green "RUN" key on the display/keypad (I). Adjust the speed as required. To stop the equipment press the red "STOP" key on the display/keypad.
7	When the equipment is in operation it should move smoothly and without chattering. If chattering or excessive vibration occurs stop the equipment, unplug the power cord, tilt it back and verify that all the tooling is seated properly.
8	Move the equipment continuously in any direction using a circular motion. Be sure to keep it moving at all times to prevent unwanted marks. View training video at www.werkmaster.com/termite-xt/ .

WerkMaster Termite XT Parts Re Order List

PARTS DESCRIPTION LIST FOR HOME DEPOT USE ONLY

Termite XT Service Kit	008-0373-01	Includes 1 set of all Suggested On-Hand QTY items listed below	1
-------------------------------	-------------	--	---

Ordering individual components of the Termite XT Service Kit does not include shipping & handling. The costs are the responsibility of each THD Store.

IMAGE	PART #	DESCRIPTION	SUGGESTED ON-HAND QTY
	520-0039-00	Termite XT Belt	2
	008-0407-00	3/8" Shear Pin & 6/32nd Screw Combo	10
	008-0207-00	3/8" Black Grommet	20
	008-0208-00	1" Black Bumper Durom 70	20
	002-1375-00	3" - 16 Grit Medium Bond (Orange) Full Plate Tooling	8
	008-0331-00	Termite XT Dust Skirt	2