

WERKMASTER™
Ultra Floor Systems

Taking it to the Wall!

Scarab™

by **WERKMASTER™**



OPERATOR'S MANUAL



IMPORTANT: Read before using your new Scarab™

WerkMaster Grinders and Sanders Inc.
6932 Greenwood Street, Burnaby, BC V5A 1X8
tel: 604.629.8700 | toll free: 1.866.373.WERK | fax: 604.444.4231
www.werkmaster.com | email: support@werkmaster.com

LIABILITY LIMITATIONS

The remedies of the user set forth under provisions of warranty outlined at the end of this manual are the exclusive and total liability of WerkMaster Grinders & Sanders Inc. with the respect to their sale or the equipment and service furnished hereunder, in connection with the performance or breach thereof, or from the sale, delivery, installation, repair or technical direction covered by or furnished under the sale, whether based on contract, warranty, negligence, indemnity, strict liability, or otherwise shall not exceed the purchase price of the unit of equipment upon which such liability is based.

WerkMaster will not in any event be liable to the user, any successors in interest or any beneficiary or assignee relating to this sale for any consequential, incidental, indirect, special or punitive damages arising out of this sale or any breach thereof, or any defects on, or failure of, or malfunction of the equipment under this sale based upon loss of use, lost profits or revenue, interest, lost goodwill, work stoppage, impairment of other goods, loss by reason of shutdown or non-operation, increased expenses of operation of the equipment, cost of purchase or replacement power of claims of users or customers of the user for service interruption whether or not such loss or damage is based on contract, warranty, negligence, indemnity, strict liability, or otherwise.

WerkMaster reserves the right to modify, alter and improve any part or parts without incurring any obligation to replace any part or parts previously sold without such modified, altered or improved part or parts.

No person is authorized to give any other warranty or to assume any additional obligation on WerkMaster's behalf unless made in writing and signed by an officer of WerkMaster.

USE ONLY GENUINE WERKMASTER PARTS AND ACCESSORIES FOR YOUR OWN SAFETY, THE SAFETY OF OTHERS AND THE LIFE OF YOUR MACHINE.

CONTENTS

Introduction	1
Machine Description	1
Specifications	1
Safety Precautions	2
Personal Safety.....	2
Physical and Mental Fitness	2
Safe Operating Distance	2
Work Safety Area Safe	3
Safety Rules.....	3
Modifications	3
Attaching Scarab to Driver	4
Handle Assembly Instructions	6
Optional Handle Assembly Instructions	7
Pre-Grinding/Polishing Instructions	8
Machine Operation	9
Changing Standard Tooling.....	9
Changing Plug 'N Go Tooling.....	10
Adjusting Dust Skirt	11
Setting Speed	11
Edging.....	11
Vacuum	12
Water Feature Port	12
Cleaning and Maintenance	13
Storage	13
Troubleshooting/Tech Support	13
Optional Accessories	14
Exploded View	15
Parts List	16
Warranty	17
Operation and Safety Guide	19

INTRODUCTION

Congratulations on your purchase of a WerkMaster Scarab. WerkMaster machines allow professional surface prep, polishing, grinding, edging, buffing and restoration of virtually any surface material, including concrete, terrazzo, stone, vinyl, and hardwood. This manual is provided to assist you in the operation and maintenance of your WerkMaster Scarab.

MACHINE DESCRIPTION

WerkMaster machines include the Scarab, Termite XT, Viper XT, Raptor XT, TITAN XT, COLOSSOS XT models. To see the complete family of WerkMaster machines visit our website at www.werkmaster.com.

Scarab

- Ideal machine for floors, walls, stairs, risers, ledges and countertops
- Grinds, strips, sand, polishes, buffs, burnishes and edges
- Edges right up to the wall, riser, and countertop
- Excellent for concrete, stone, hardwood, terrazzo and vinyl tile
- Handheld for countertops, walls, risers and ledges; use with removable, upright handle on floors and stairs
- 90° head rotation is designed to get into tight places and small spaces
- Works with the Milwaukee, Metabo, Flex, DeWalt and Alpha variable speed polishers
- The Octi-Disc™ self-balancing 5 head system is used with our ULTRA-FLEX Plug 'N Go diamond abrasive tools or standard 3" (76 mm) polishing pads

SPECIFICATIONS

MODEL	DIMENSIONS	l x w x h	WEIGHT
Scarab	in	12 x 8 x 7	lbs 22
	cm	31 x 20 x 18	kg 10

SAFETY PRECAUTIONS

WARNING

Read this manual and all safety precautions before attempting to operate your WerkMaster Scarab. Failure to follow the safety precautions could result in electric shock, fire and/or serious injury.

The term “variable speed grinder/polisher” refers to your main-operated (corded) power tool or battery operated (cordless) power tool. **ALWAYS** refer to the variable speed grinder/polisher manual when using the Scarab.

Personal Safety

- Wear eye and ear protection at all times when operating WerkMaster machines. Use only ANSI/OSHA approved safety glasses to help prevent eye injury.
- Wear appropriate clothing and footwear when operating WerkMaster machines. Do not wear loose clothing or jewelry that can become entangled in moving parts.
- Safety equipment such as dust mask, non-skid safety shoes, hard hat, or hearing protection used for appropriate conditions will reduce personal injuries.
- Avoid accidental starting. Ensure the switch is in the OFF position before plugging in. Do not carry power tools with your finger on the switch or plug in power tools that have the switch on.
- Remove any adjusting key or wrench before turning the power tool on. A wrench or a key left attached to a rotating part of the power tool may result in personal injury.
- Do not overreach. Keep proper footing and balance at all times.
- Always use a vacuum. Ensure the variable speed grinder/polisher is properly connected to the Scarab and follow all operating procedures.
- Keep handles dry, clean and free from oil and grease.

Physical and Mental Fitness

- **Never** operate WerkMaster machines under the influence of drugs or alcohol, when taking medications that impair the senses or reactions, or when excessively tired or under stress.

Safe Operating Distance

- WerkMaster machines are designed to be operated by one person at a time. Maintain a safe operating distance to other persons. Keep bystanders a safe distance away during operation by blocking off the work area in all directions with roping, safety netting, or other material. Failure to do so may result in someone being injured by flying debris or being exposed to harmful dust and noise.
- Maintain a safe operating distance from flammable materials. Sparks from the cutting action of WerkMaster machines may ignite flammable materials or vapors.

Work Area Safety

- Keep work area clean and well lit.
- Turn **off** the WerkMaster before disconnecting power.
- **DO NOT** disconnect power by pulling the cord. To disconnect power, grasp the plug, not the cord. To remove twist-lock plugs, push in and turn clockwise to engage, and turn counter-clockwise and pull to remove.

Safety Rules

- **ALWAYS** refer to the variable speed grinder/polisher manual for safe operation
- **DO NOT** let comfort or familiarity with this tool (*gained from repeated use*) replace strict adherence to polisher safety rules. If you use this tool unsafely or incorrectly, you may suffer serious personal injury.
- Running accessories over rated speeds may cause injury.
- Firmly secure any loose surface before operating the Scarab. Do not use your hand or body to secure loose surfaces.
- **Hold the tool firmly with both hands. Do not drop.** When using either the handheld handle, or the full extension articulating handle assembly, be sure to keep the Scarab level or flat with the surface, using smooth and continuous movement. Avoid objects projecting out of the solid surface you are working on as they may cause damage to the tooling.
- Keep hands away from rotating parts.
- **When sanding metallic surfaces, the operator should watch for flying sparks.** Hold the tool so that the sparks fly away from you, other persons and flammable materials.
- **DO NOT leave the tool running.**
- **DO NOT** touch the work surface immediately after operation; it may be hot.
- Pay attention; the Plug 'N Go tooling plates may continue to rotate after the tool is switched off.
- Ventilate your work area adequately when operating a Scarab.
- Use of this tool to sand or grind could expose user to dust containing hazardous substances. Use appropriate respiratory protection.

Modifications

- **DO NOT** modify WerkMaster machines. **Modifications will void the warranty** and may result in injury to persons and damage to the machine.

ATTACHING SCARAB TO DRIVER

WARNING

Do not attempt to attach the Scarab with your variable speed grinder/polisher plugged in.

Compatible Variable Speed Grinders/Polishers

Refer to Exploded View of Scarab on page 15, Parts List on page 16.

- Milwaukee™ 5540 Polisher
- DeWalt™ DWP849
- Metabo™ PE 12–175
- Flex™ LK603VVB
- Alpha™

Always refer to the variable speed grinder/polisher manual.

1. Choose the adapter ring that corresponds to your variable speed grinder/polisher.

D-DeWalt™
(#37)

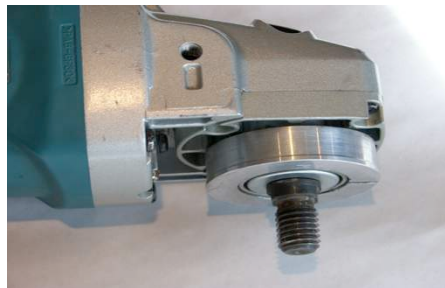
F-Flex™
(#39)

E-Metabo™
(#38)

Milwaukee™
(#26)



2. Position the ring so that the outer lip is away from the grinder.



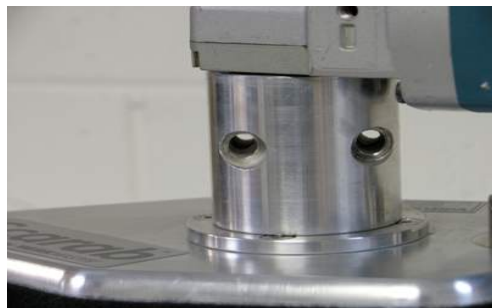
3. Thread the appropriate arbor extension into the Scarab.
M–Metric (#36), **I**–Imperial (#23) or **EXT** will be stamped on the arbor.



4. Thread the arbor of the variable speed grinder/polisher into the arbor extension, leaving a very small gap between the two.



5. Place the coupler halves (#7, #8) around the mounting rings. To fit all the grooves into place you may need to adjust the gap between the arbor and the arbor extension. Insert and tighten bolts (#12) to hold everything in place.



HANDLE ASSEMBLY INSTRUCTIONS

1. Choose the appropriate handle sides depending on the variable speed grinder/polisher you are using.

Refer to Exploded View on page 15, Parts List on page 16.

DeWalt (#34)

Standard (#33)



2. Using the M10 bolts provided (#12) fasten the longer (top) end to the handle so that the handle narrows to the correct span for your variable speed grinder/polisher.



3. Fasten the handle assembly to your variable speed grinder/polisher.

Note: Most variable speed grinder/polishers come with two (2) bolts to fasten the handle assembly to the device.

DeWalt will require 1/2" bolts as the variable speed grinder/polisher does not always come with an adjustable handle.



OPTIONAL HANDLE ASSEMBLY INSTRUCTIONS

1. Loosen bolts (#35). Reposition the handle assembly forward until horizontal. Tighten bolts (#35). Loosen handle grip bolt (#12) and ensure the saddle bolt hole is facing upwards. Tighten bolts (#12).
2. Insert saddle bolt through hole in handle grip (#32). Use the wing nut provided to fasten the saddle (#41) in place.



3. Connect the full extension articulating handle (#40) to the saddle, applying light pressure to snap into place.



PRE-GRINDING/POLISHING INSTRUCTIONS

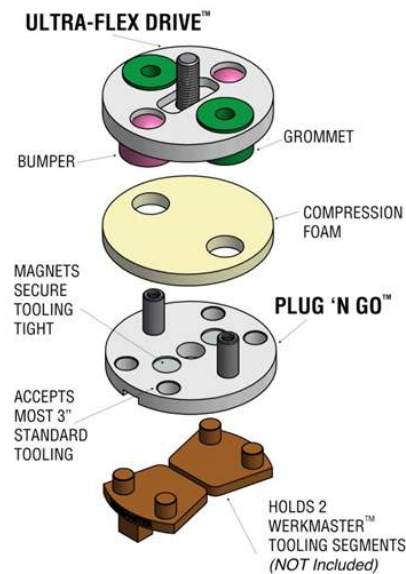
1. Choose surface type.



Concrete Terrazzo Stone Wood Vinyl

2. Test the concrete surface using the MOHS Hardness Test Kit. For more information visit the Learning Center at www.werkmaster.com.
3. Choose the pad driver and Plug 'N Go tooling plate.

MODE	USE
Rigid	2 bumpers, 2 grommets
ULTRA-Flex	Remove bumpers, leave grommets
Medium Flex	Yellow compression foam



4. Choose tooling. For a list of tooling options see the Tooling Selection Guide under Products at www.werkmaster.com.
5. Become proficient with your Scarab. Practice on a test surface is recommended.

MACHINE OPERATION

1. Always ensure the variable speed grinder/polisher is unplugged when changing tooling or when not in use.
2. Set speed on low.
3. Securely grip the handle prior to turning variable speed grinder/polisher ON.
4. Squeeze trigger to start.
5. Release trigger prior to lifting off surface.
6. Unplug the machine and wait until the Plug 'N Go tooling plates come to a complete stop prior to making any adjustments.

NOTE: ALWAYS refer to the variable speed grinder/polisher manual.

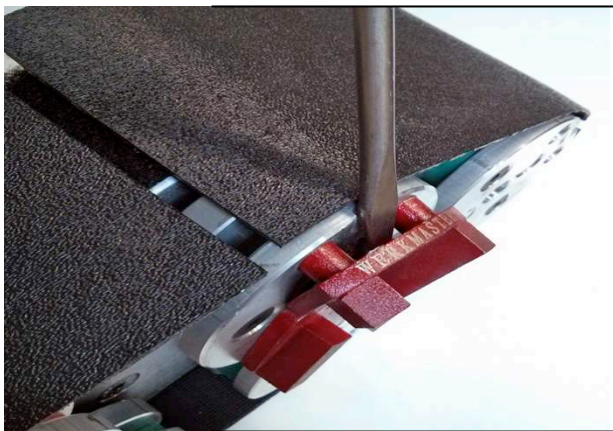
CHANGING STANDARD TOOLING

1. Standard Velcro™ tooling should be centered properly onto the Velcro™ plate.
2. To remove, simply pull Velcro™ apart.
3. Clean dust extraction and collection device/vacuum after every use.



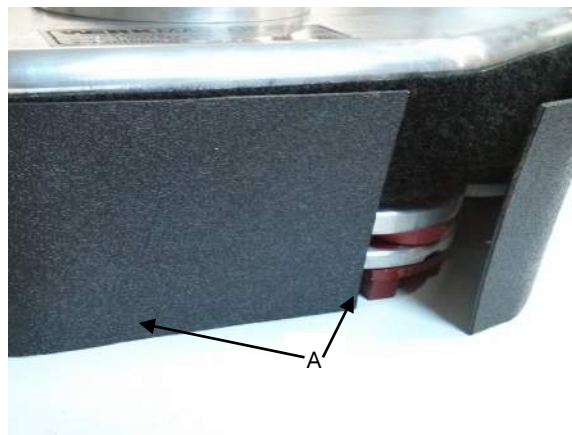
CHANGING PLUG 'N GO TOOLING

1. Firmly grasp Plug 'N Go tooling. Attach tooling by aligning the two (2) prongs into the Plug 'N Go plate. Earth magnets will snap and secure tooling in place. Ensure that each tooling piece is flush to the plate.
2. The tooling can be removed by hand, with a screwdriver or with pliers. Protective gloves are recommended to protect from possible injury on small metal shards.
3. Clean and store tooling in a dry compartment.



ADJUSTING DUST SKIRT

1. Adjust Velcro™ dust skirt (A) so that it is flush, or level, with the height of the tooling. This helps direct dust particles to vacuum port, as well as protect operator and surrounding objects from harm or damage from possible projected objects.
2. The dust skirt comes in three (3) removable sections to allow the operator to edge right to the wall.
3. As a safety measure, when removing a section of the dust skirt in order to run the machine right to the wall keep the open section away from operator.



SETTING SPEED

TOOLING	SPEED
Metal Bond	Low
Resins	Medium
Polishing	High

EDGING

1. **DO NOT** run Scarab with Plug 'N Go tooling right off the edge of counters as the tooling segments might be ejected possibly causing harm or damage.
2. A video demonstration of the Scarab edging can be viewed at www.werkmater.com Products/Machines/Scarab.

VACUUM

1. Use a 1 ½" hose reducer (not included) between the vacuum port (#9) to fit a standard 2" vacuum hose.
2. Only run vacuum while dry grinding.
3. Always refer to vacuum manual.



WATER FEATURE PORT

DANGER

Use extreme caution when working with electricity and water. Severe injury or death may occur if caution is not used.

1. **ALWAYS** refer to the variable speed grinder/polisher manual **prior** to using the water feature
2. Insert water feature plug into the vacuum port.
3. Ensure the blue flow control valve is in the OFF position.
4. Attach a ¾" male (standard garden hose) to the ¾" female end of the water feature. To prevent leaks, secure tightly with a new washer.
5. Turn on water supply. Adjust the blue flow control valve as wet grinding process requires.



CLEANING AND MAINTENANCE

The WerkMaster Scarab requires minimal maintenance.

1. Remove tooling after each use.
2. Vacuum and wipe clean of any built-up debris.

STORAGE

Store in a dry, non-corrosive environment.

TROUBLESHOOTING/TECH SUPPORT

A video demonstration of the Scarab can be viewed at www.werkmater.com/Products/Machines/Scarab.

For technical support, email support@werkmaster.com, fill out a [Request for Technical Support Form](#) or phone 604.629.8700, toll free at 1.866.373.WERK.

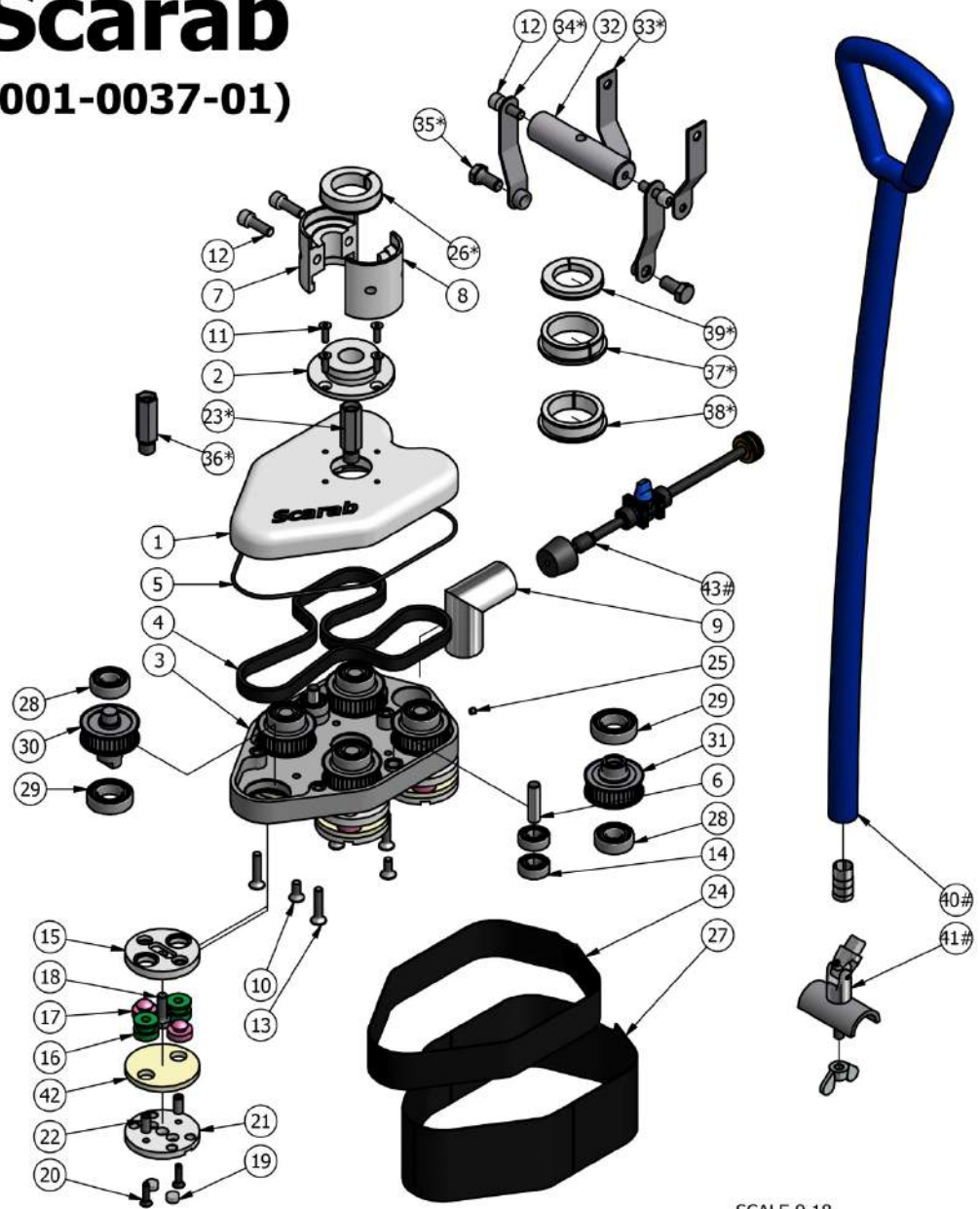
OPTIONAL ACCESSORIES

PART NO.	ITEM	
008-0273-00	Foam/Velcro Adapter Plate, 3"	
008-0265-00	Plug 'N Go Plate, 3"	
002-0673-01	Plug 'N Go Velcro Hook	
008-0272-00	Plug 'N Go Velcro Hook Replacement	
008-0158-00	Foam Riser, 3" x 3/8"	
008-0318-00	Compression foam, 3" X 1/4"	
010-0018-00	Water Feature	
007-0006-00	MOHS Hardness Test Kit	
010-0016-00	Full Extension Handle Assembly	

EXPANDED VIEW

Scarab

(001-0037-01)



SCALE 0.18

Notes:

- *: Dependent on make and model of variable speed polisher used.
- #: Optional accessory.

PARTS LIST

ITEM	PART NUMBER	DESCRIPTION
1	100-0512-01	Drive Train, Upper Shell
2	100-0407-01	Drive Train, Coupler Mount
3	100-0513-01	Drive Train, Lower Shell
4	520-0034-00	Belt, TP
5	580-0074-00	O-Ring
6	100-0514-01	Drive Train, Idler Pin
7	100-0410-01	Coupler, Main Body, Part A
8	100-0411-01	Coupler, Main Body, Part B
9	110-0046-01	Vacuum Manifold Assembly
10	590-0193-00	Fastener
11	590-0197-00	Fastener
12	590-0198-00	Fastener
13	590-0209-00	Fastener
14	500-0229-00	Bearing
15	008-0259-01	Pad Driver, Ultra-Flex, 3 in, Thin
16	008-0192-00	Shear Pin
17	008-0152-00	OD Bumper, 1 in, 40 Durom, Red
18	590-0126-00	Fastener
19	580-0072-00	Magnet
20	590-0019-00	Fastener
21	008-0277-00	Plate, Plug 'N Go, 3 in
22	008-0040-00	Shear Pins
23*	100-0521-01	Coupler, Imperial Adapter Shaft
24	008-0345-00	Velcro Loop
25	590-0211-00	Fastener Milwaukee Ring Adapter
26*	100-0516-01	Coupler,
27	008-0233-00	Dust Skirt
28	500-0012-00	Bearing
29	500-0006-00	Bearing
30	500-0230-00	Sprocket
31	500-0250-00	Sprocket
32	100-0416-01	Handle Grip
33*	100-0417-01	Handle, Side Plate
34*	100-0476-00	Handle, DeWalt Side Plate
35*	590-0228-00	Fastener
36*	100-0522-01	Coupler, Metric Adapter Shaft
37*	100-0517-00	Coupler, DeWalt Adapter Ring
38*	100-0518-00	Coupler, Metabo Adapter Ring
39*	100-0519-00	Coupler, Flex Adapter Ring
40#	130-0068-00	Handle Assembly, Long
41#	580-0154-00	Handle Saddle Assembly
42	008-0318-00	Compression Foam, 3 in, yellow
43#	010-0018-00	Water Feature

NOTE: [M] Milwaukee™ [MB] Metabo™ [D] DeWalt™ [F] Flex™ [A] Alpha™

*Dependent on make and model of variable speed grinder/polisher used.

#Optional accessory

WARRANTY

WerkMaster Grinders & Sanders Inc., herein referred to as WerkMaster, warrants that each new Scarab, manufactured by WerkMaster to be free from defects in material and workmanship in normal use and service for a period of (3) three years from date of shipment to the original Purchaser or Distributor.

Rights & Conditions

WerkMaster will, at its option, repair or replace, at the WerkMaster factory or at a point designated by WerkMaster, any part which shall appear to the satisfaction of WerkMaster inspection to have been defective in material or workmanship. WerkMaster reserves the right to modify, alter and improve any part or parts without incurring any obligation to replace any part or parts previously sold without such modified, altered or improved part or parts.

This warranty is in lieu of and excludes all other warranties, expressed, implied, statutory, or otherwise created under applicable law including, but not limited to the warranty of merchantability and the warranty of fitness for a particular purpose. In no event shall the Seller or the Manufacturer of the product be liable for special, incidental, or consequential damages, including loss of profits, whether or not caused by or resulting from the negligence of Seller and/or the Manufacturer of the product unless specifically provided herein.

In addition, this warranty shall not apply to any products or portions thereof which, at WerkMaster's discretion, have been subjected to abuse, misuse, improper installation, maintenance, or operation, electrical failure or abnormal conditions, and to products which have been tampered with, altered, modified, repaired, reworked by anyone not approved by the Seller, or used in any manner inconsistent with the provisions of the above or any instructions or specifications provided with or for the product.

Except for conditions or warranties which may not be excluded by law, the Seller makes no warranty of its own on any item warranted by WerkMaster, and makes no warranty on other items unless it delivers to the Purchaser a separate written warranty document specifically warranting the item. The Seller has no authority to make any representation or promise on behalf of WerkMaster or to modify the terms or limitations of this warranty in any way.

Delivery, Damages, Shortages

Seller shall use reasonable efforts to attempt to cause the Products to be delivered as provided for in these Terms & Conditions. Delivery to the initial common carrier shall constitute the delivery to the Purchaser. Seller's responsibility, in so far as transportation risks are concerned, ceases upon the delivery of the Products in good condition to such carrier at the F.O.B. point and all the Products shall be shipped at the Purchaser's risk. Seller shall not be responsible or liable for any loss of income and/or profits, or incidental, special, consequential damages resulting from Seller's delayed performance in shipment and delivery.

Return of Defective Products

Defective or failed material shall be held at the Purchaser's premises until authorization has been granted by Seller to return or dispose of Products. Products that are to be returned for final inspection must be returned Freight Prepaid in the most economical way. Credit will be issued for material found to be defective upon Seller's inspection based on prices at time of purchase.

WARRANTY continued

FORCE MAJEURE

Seller's obligation hereunder are subject to, and Seller shall not be held responsible for, any delay or failure to make delivery of all or any part of the Product due to labor difficulties, fires, casualties, accidents, acts of the elements, acts of God, transportation difficulties, delays by a common carrier, inability to obtain Product, materials or components or qualified labor sufficient to timely perform part of or all of the obligations contained in these terms and conditions, governmental regulations or actions, strikes, damage to or destruction in whole or part of manufacturing plant, riots, terrorist attacks or incidents, civil commotions, warlike conditions, flood, tidal waves, typhoon, hurricane, earthquake, lightning, explosion or any other causes, contingencies or circumstances within CANADA not subject to the Seller's control which prevent or hinder the manufacture or delivery of the Products or make the fulfillment of these terms and conditions impracticable. In the event of the occurrence of any of the foregoing, at the option of Seller, Seller shall be excused from the performance under these Terms and Conditions, or the performance of the Seller shall be correspondingly extended. This document sets forth the terms and conditions pursuant to which the purchaser ("Purchaser") will purchase and WerkMaster ("Seller") will sell the products, accessories, attachments (collectively "the Products") ordered by the Purchaser. These terms and conditions shall govern and apply to the sale of Seller's Products to Purchaser, regardless of any terms and conditions appearing on any purchase order or other forms submitted by Purchaser to Seller, or the inconsistency of any terms therein and herein.

To get the best protection from your WerkMaster Warranty be sure to register your product(s) online at www.werkmaster.com/warranty.

Rev 09/2013 SWM

WARNING

SAFETY TOPICS:

Read the Operator's Manual or the Operation and Safety Guide and all safety precautions before attempting to operate WerkMaster machines. Failure to follow the safety precautions could result in severe personal injury or death.



SAFETY CHECKLIST:

WARNING: ALWAYS turn off the equipment and unplug the power cord when changing discs/tooling, before servicing, and when not in use.



1. Before connecting the equipment to the power source make sure the power source is the correct voltage.
2. Ensure all cords on the equipment are securely fastened and in good repair.
3. Ensure all extension cords and power outlets are rated for the intended use, are in good repair, and are properly grounded (3 prong configuration).
4. Never operate the equipment under the influence of drugs or alcohol or when extremely fatigued.
5. Follow all safety requirements pertaining to the grinder/polisher.
6. If the equipment doesn't start or stops unexpectedly, first check power source and all electrical connections, then go to www.werkmaster.com or call Technical Support: 866.373.9375



WARNING: Never turn the equipment on while it is tilted back. Discs/tooling attached to the bottom could eject and become a lethal projectile.



Wear appropriate personal safety equipment such as hearing and eye protection, dust mask or respirator.



Tool Application: The SCARAB attaches to a variable speed grinder/polisher to grind and/or polish concrete surfaces. The SCARAB can be used for edging, getting in to hard to reach areas; and for floors, walls, stairs, countertops, and risers.

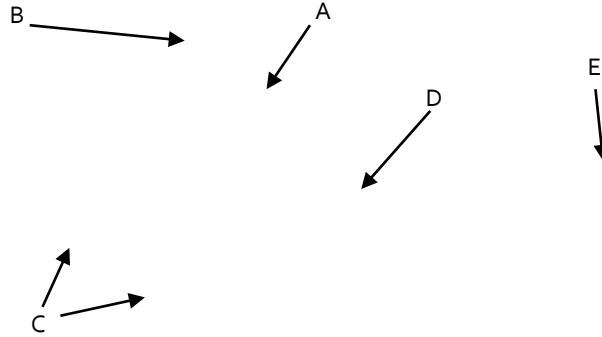


Fig 1

Fig 2

Tool Operation:

Step	Action
1	Ensure the polisher is turned off, unplugged and securely fastened to the SCARAB. The 2 bolts of the mounting coupler (A) should be tight. The polisher should not be able to swivel.
2	Tilt the equipment on its side (Fig 2). Choose the appropriate tooling holder attachment – 3” magnetic Plug 'N Go plate (E) for Metal Bond tools or 3” Foam/Velcro Adapter plate for polishing resins. Insert the 2 shear pins into the rubber grommets. Then attach the corresponding tooling to the plate.
3	Lift the equipment back to the upright position. Loosen and lower the 3 sections of the dust skirt (C) so that they are just above the working surface. Connect the vacuum hose to the vacuum pipe (D). Turn speed on the polisher down to a low setting. Plug in the power cord.
4	With one hand, grasp the handle bar on the polisher (not shown). To start the polisher, squeeze the activation trigger. Adjust the speed as required. To stop the equipment let go of the activation trigger.
5	When the equipment is in operation it should move smoothly and without chattering. If chattering or excessive vibration occurs, stop the equipment, unplug the power cord, tilt the machine back and check that all the Plug 'N Go/Adapter plates are installed correctly and the tooling is seated properly
6	Move the equipment continuously in any direction using a circular motion. Be sure keep the machine moving at all times to prevent unwanted marks. View training video at www.werkmaster.com .
7	NOTE: There are 4 different mounting rings (B) provided. They are designed to allow a Makita, DeWalt, Flex, Metabo or Alpha variable speed grinder/polisher to be connected to the Scarab.